

[Android]link2sd使用教學

文章分類：Android , Android軟體 / 迴響：26 則

S5830I的記憶體真的很小，Link2SD可以有效解決

不過步驟有點繁瑣，且需要切割記憶卡，手機也要ROOT

使用前請三思

如果你再切SD卡時不小心切到硬碟可不關我的事

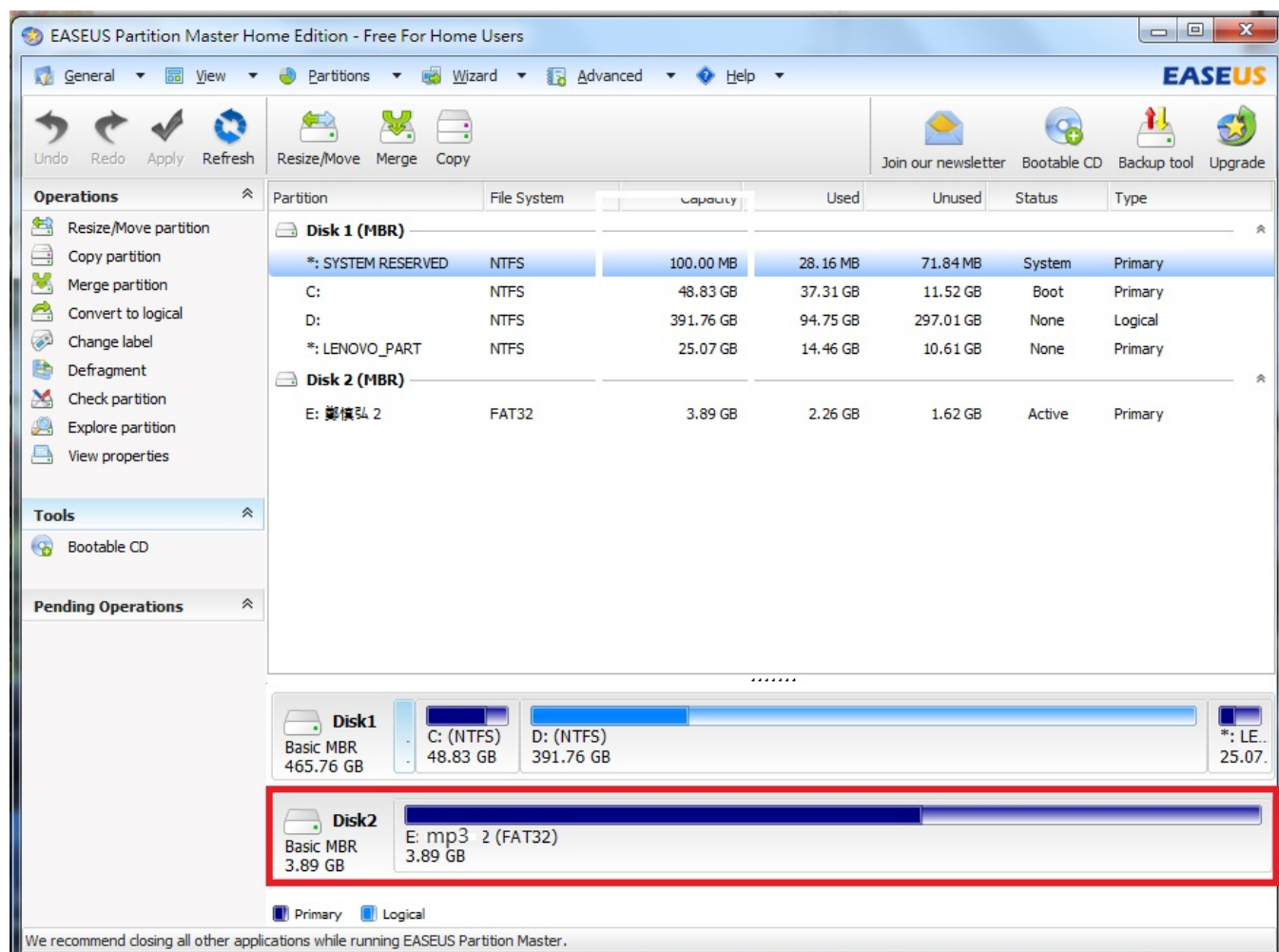
如果手機壞掉了，也別怪我喔!

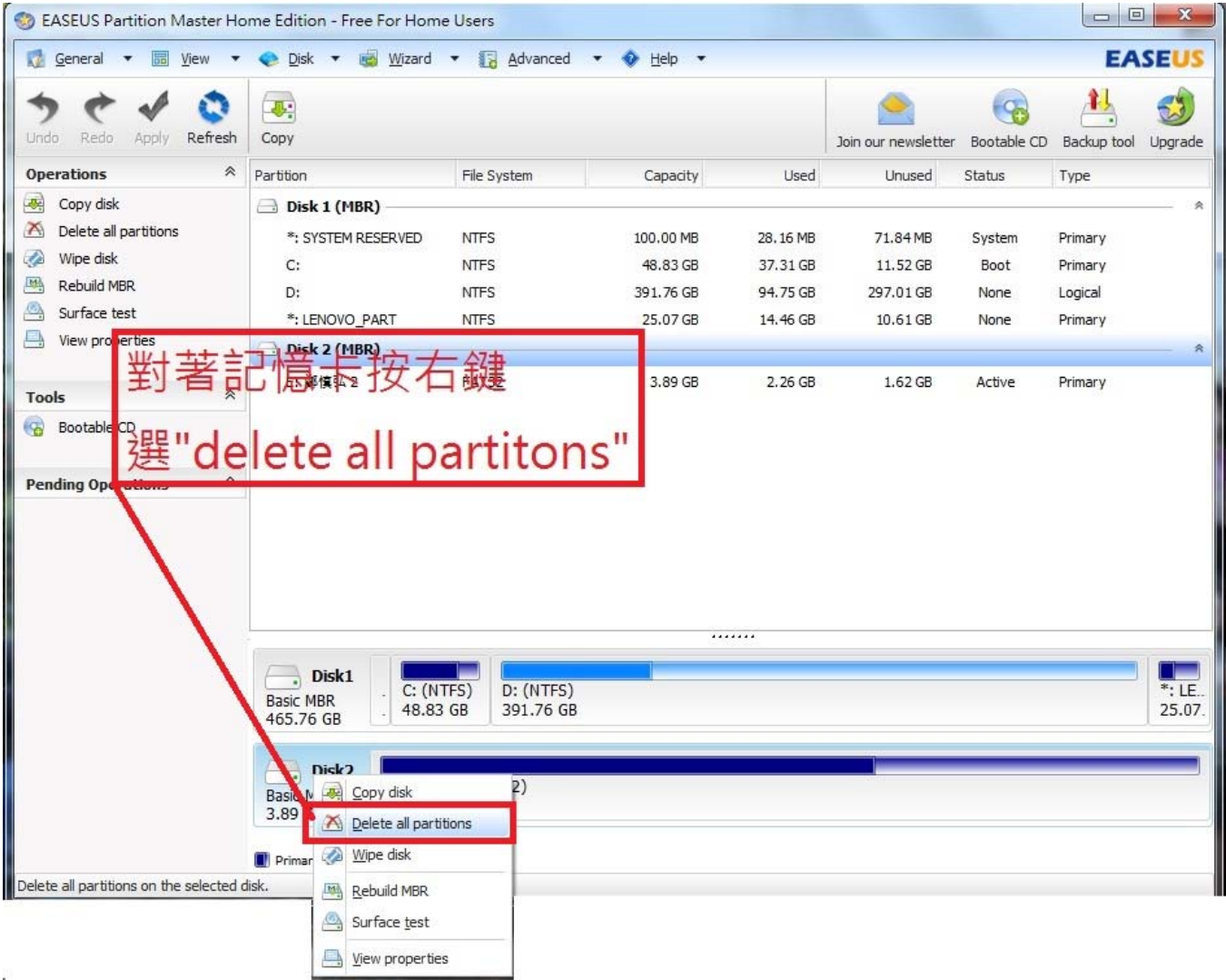
方法

(切割完記憶卡原本的資料會全不見，所以請先備份)

1.下載:下載EPM

2.切割記憶卡(請看圖片)





EASEUS Partition Master Home Edition - Free For Home Users

General View Partitions Wizard Advanced Help

Undo Redo Apply Refresh Create

Join our newsletter Bootable CD Backup tool Upgrade

Operations

- Create partition
- Wipe data
- View properties

Tools

- Bootable CD

Pending Operations

Delete all partitions on Disk 2

Partition	File System	Capacity	Used	Unused	Status	Type
Disk 1 (MBR)						
*: SYSTEM RESERVED	NTFS	100.00 MB	28.16 MB	71.84 MB	System	Primary
C:	NTFS	48.83 GB	37.31 GB	11.52 GB	Boot	Primary
D:	NTFS	391.76 GB	94.75 GB	297.01 GB	None	Logical
*: LENOVO_PART	NTFS	25.07 GB	14.46 GB	10.61 GB	None	Primary
Disk 2 (MBR)						
*	Unallocated	3.89 GB	0 Bytes	3.89 GB	None	Logical

自來，再按一次右鍵，選"create partiton"

Basic MBR 465.76 GB

C: (NTFS) 48.83 GB

D: (NTFS) 391.76 GB

*: LE... 25.07

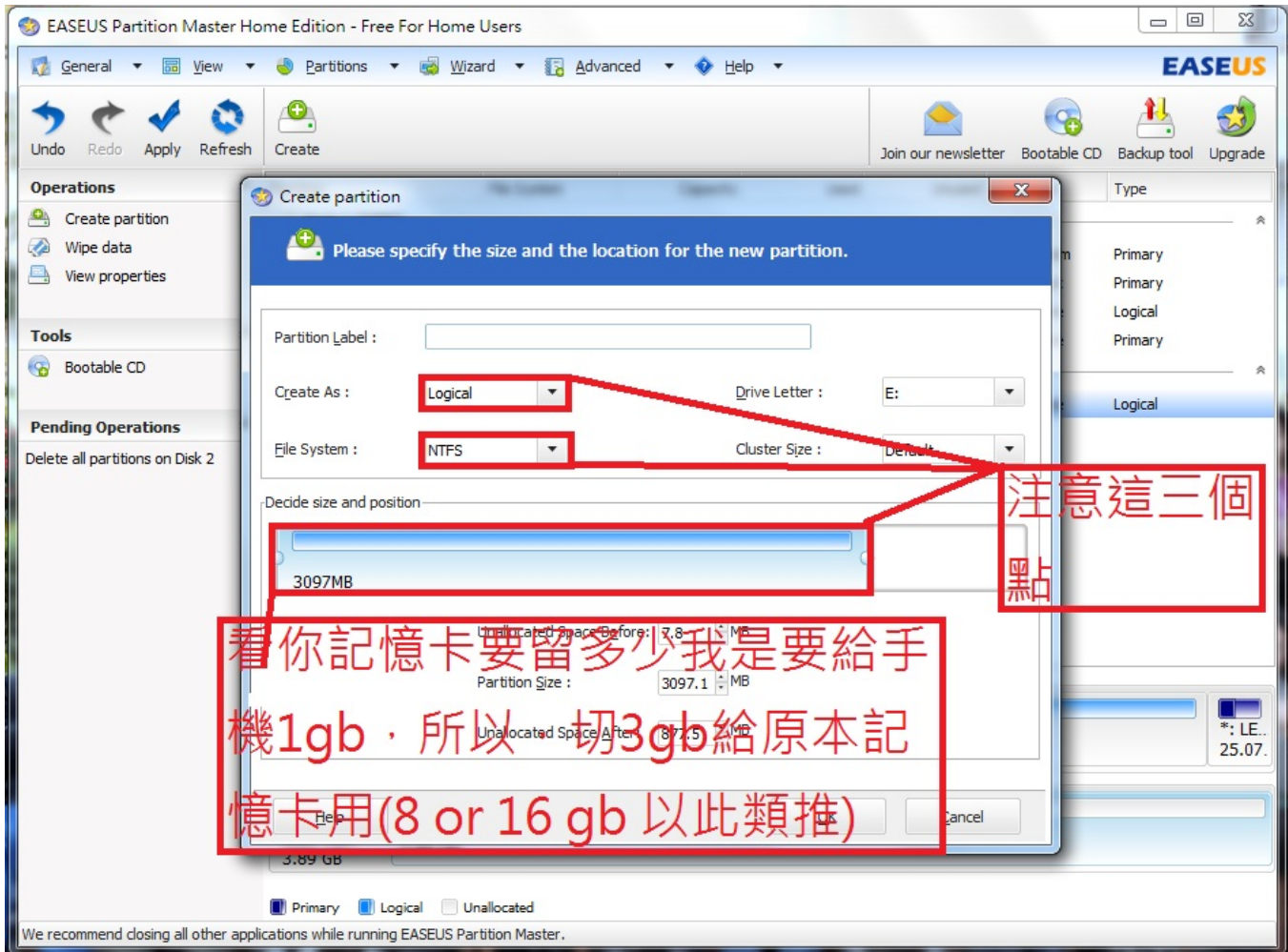
Basic MBR 3.89 GB

Unalloca... 3.89 GB

- Create partition
- Wipe data
- View properties

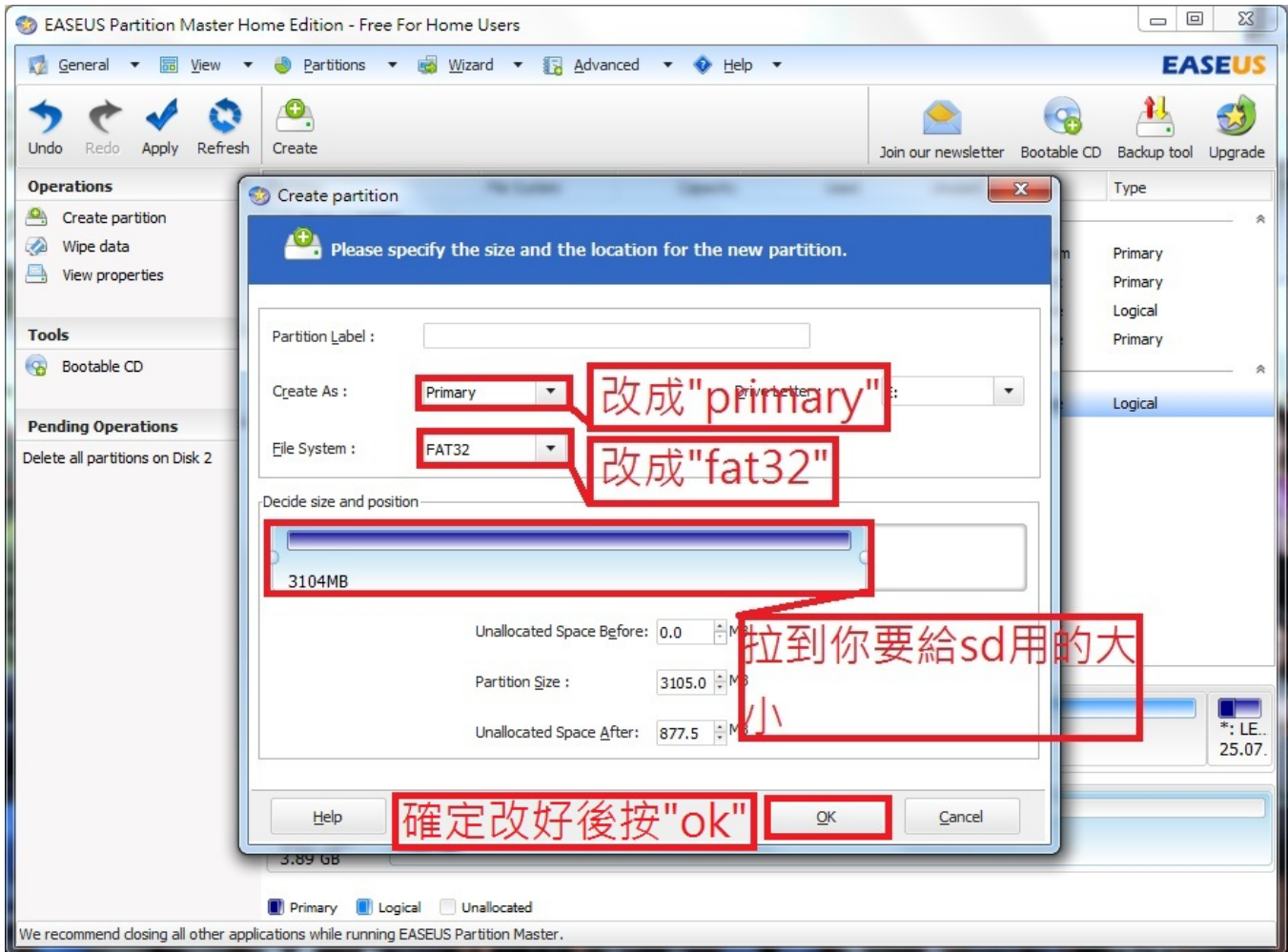
Primary Logical

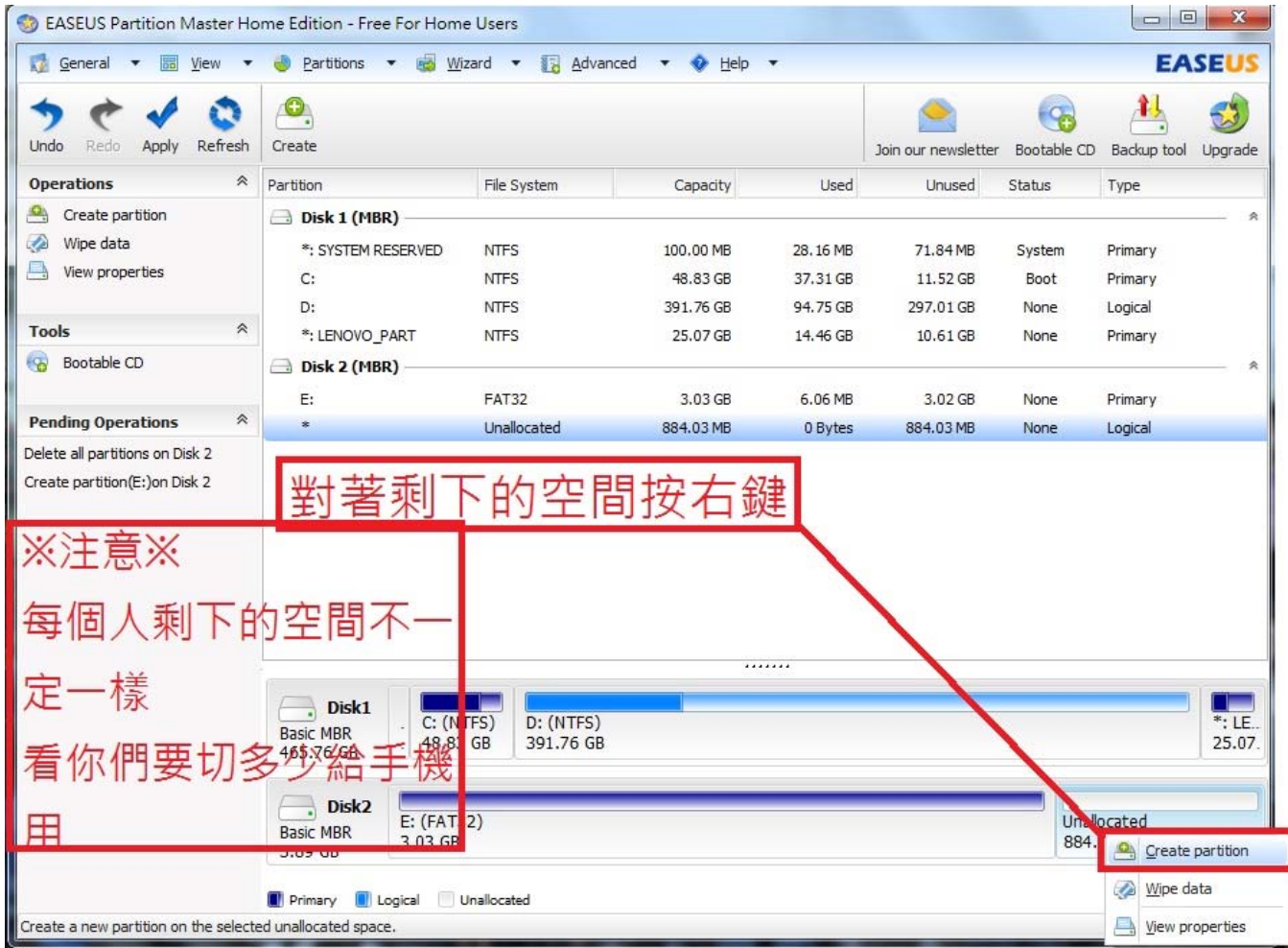
Create a new partition on the selected unallocated space.



看你記憶卡要留多少我是要給手機1gb，所以一切3gb給原本記憶卡用(8 or 16 gb 以此類推)

注意這三個點

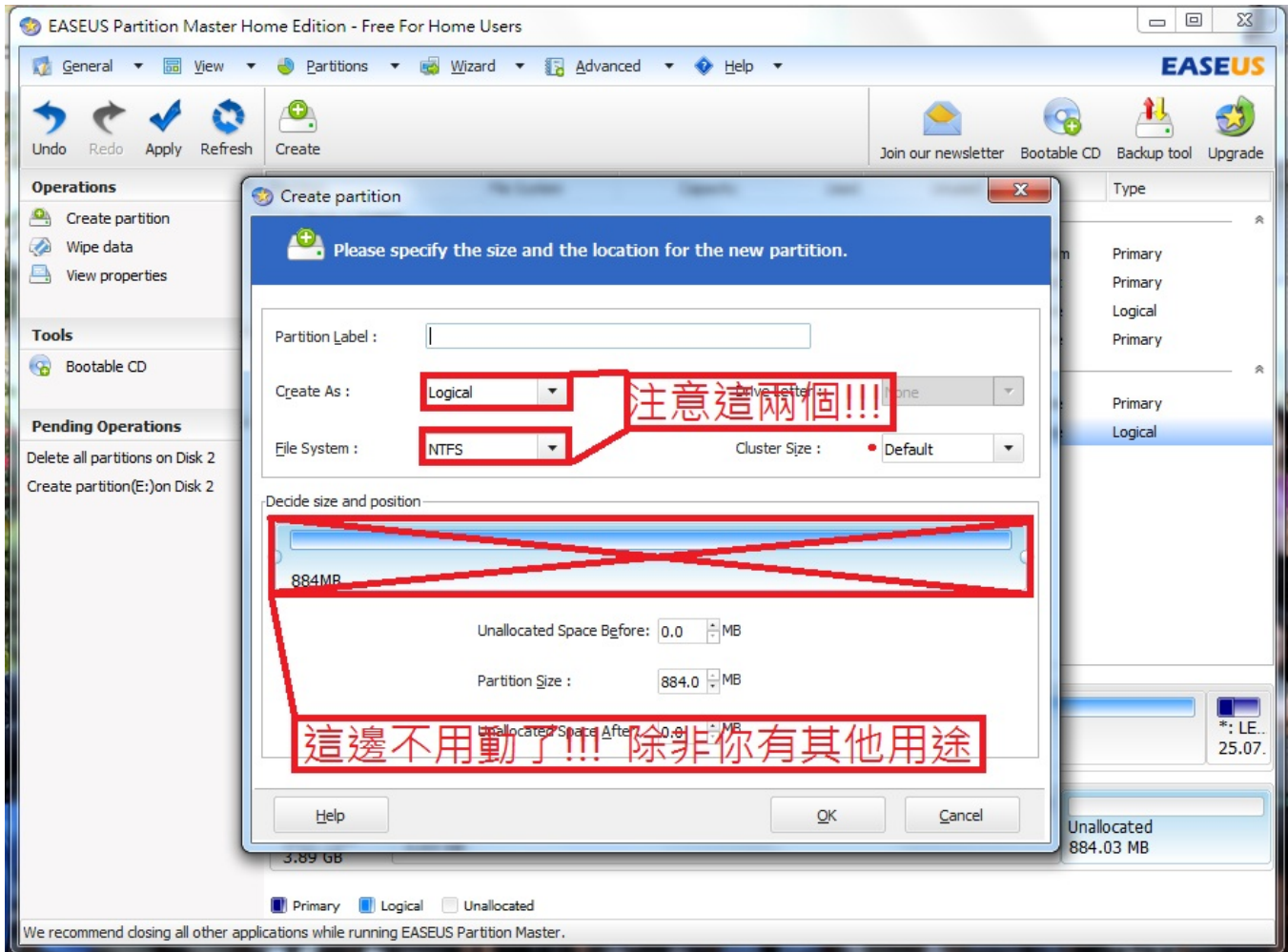


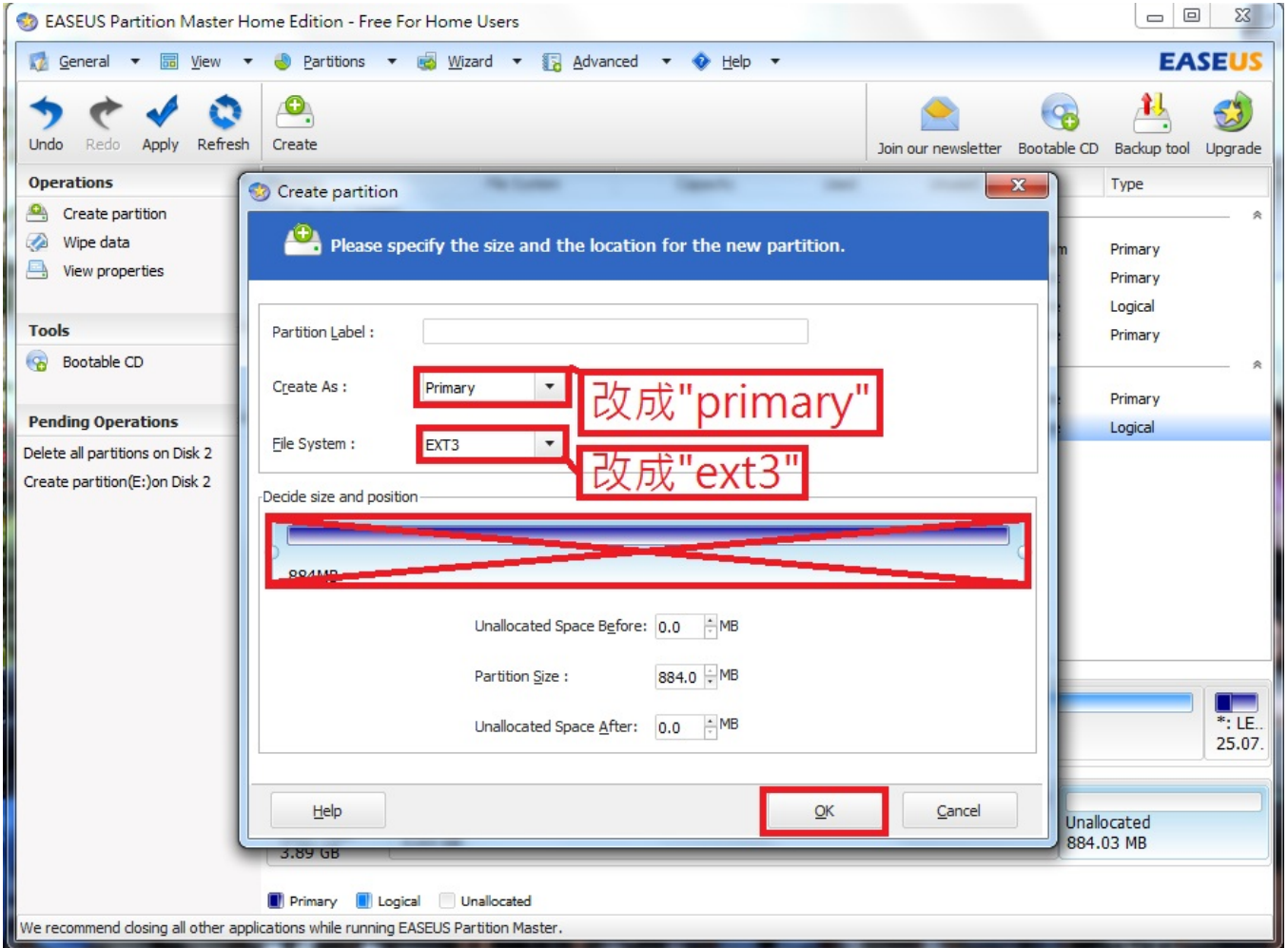


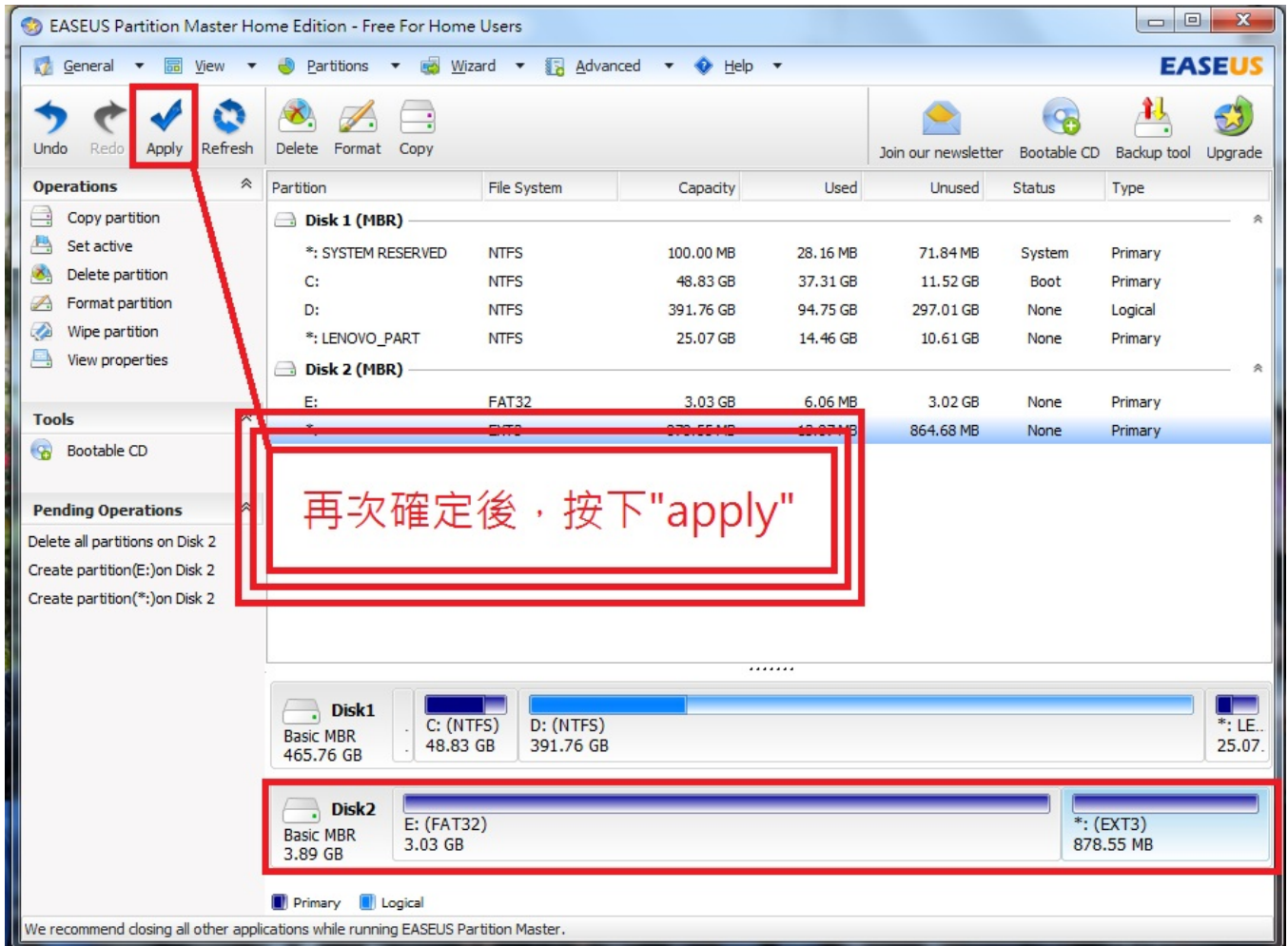
對著剩下的空間按右鍵

※注意※
每個人剩下的空間不一
定一樣
看你們要切多少給手機
用

Create partition
Wipe data
View properties







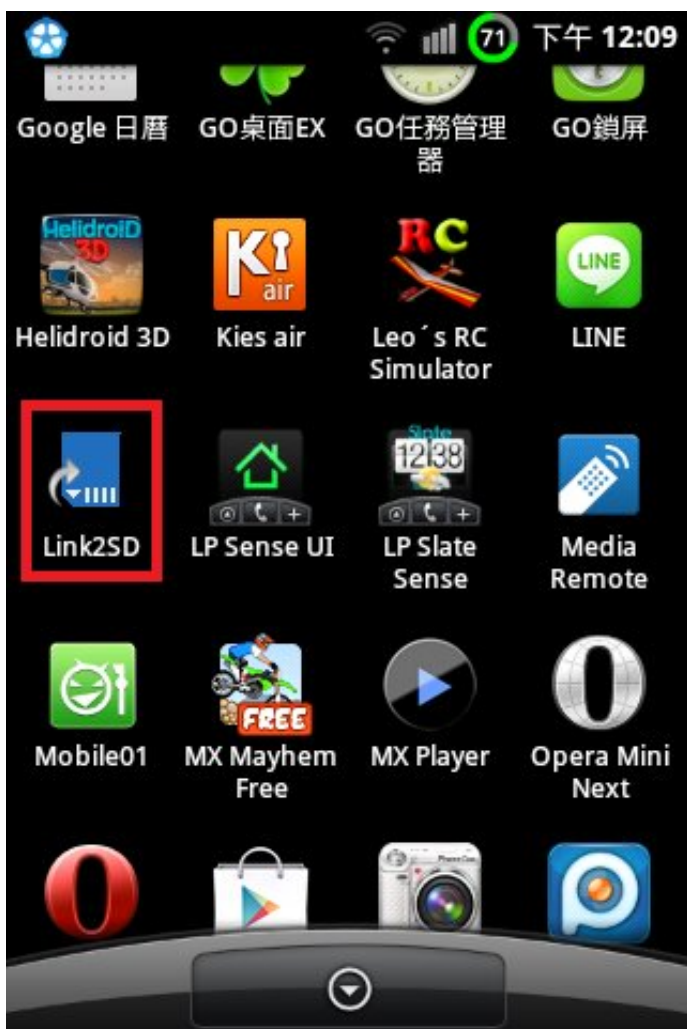
3.請到Play商店下載Link2SD

四.開啟軟體

第一次啟動後它會叫你選選擇"ext 3"

選完後記得要"快速重新啟動"(link2sd內有)

方法:





如果你的手機抓不到記憶卡第二分區請照下列方法重新連結







然後重開機(可用軟體內"快速重啟")

如果還是抓不到請重新分割記憶卡試試看